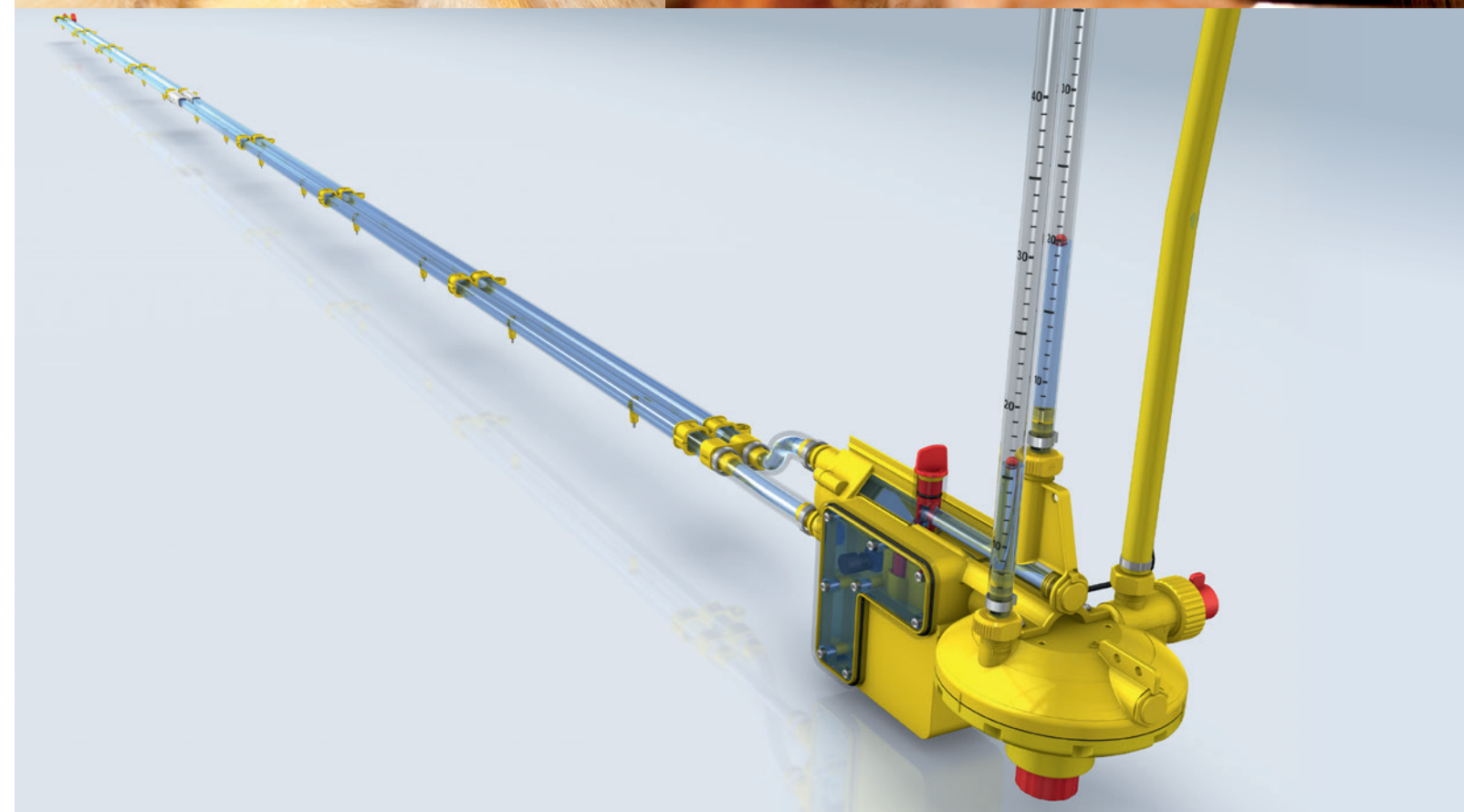
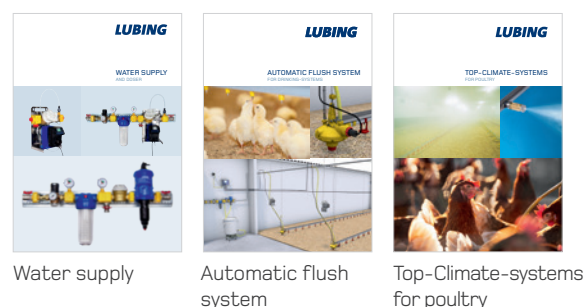


## CIRCULATION-DRINKING-SYSTEM FOR LAYING MANAGEMENT IN CAGES OR CAGE FREE MULTI-LEVEL SYSTEMS



### SUITABLE COMPLEMENT



# LUBING

LUBING Maschinenfabrik GmbH & Co. KG

Lubingstraße 6 · 49406 Barnstorf

+49(0)54 42 - 9879-0

+49(0)54 42 - 9879-33

www.lubing.com · info@lubing.com

# LUBING CIRCULATION-DRINKING-SYSTEM

LUBING Drinking-Systems are proven and successfully used hundreds of thousand times for the optimal water supply of your animals in all types of housing. Due to their modular design, they can be expanded and supplemented at any time. With the patented and world-leading LUBING nipples, they form the optimum solution for efficient, animal welfare and hygienic poultry management.

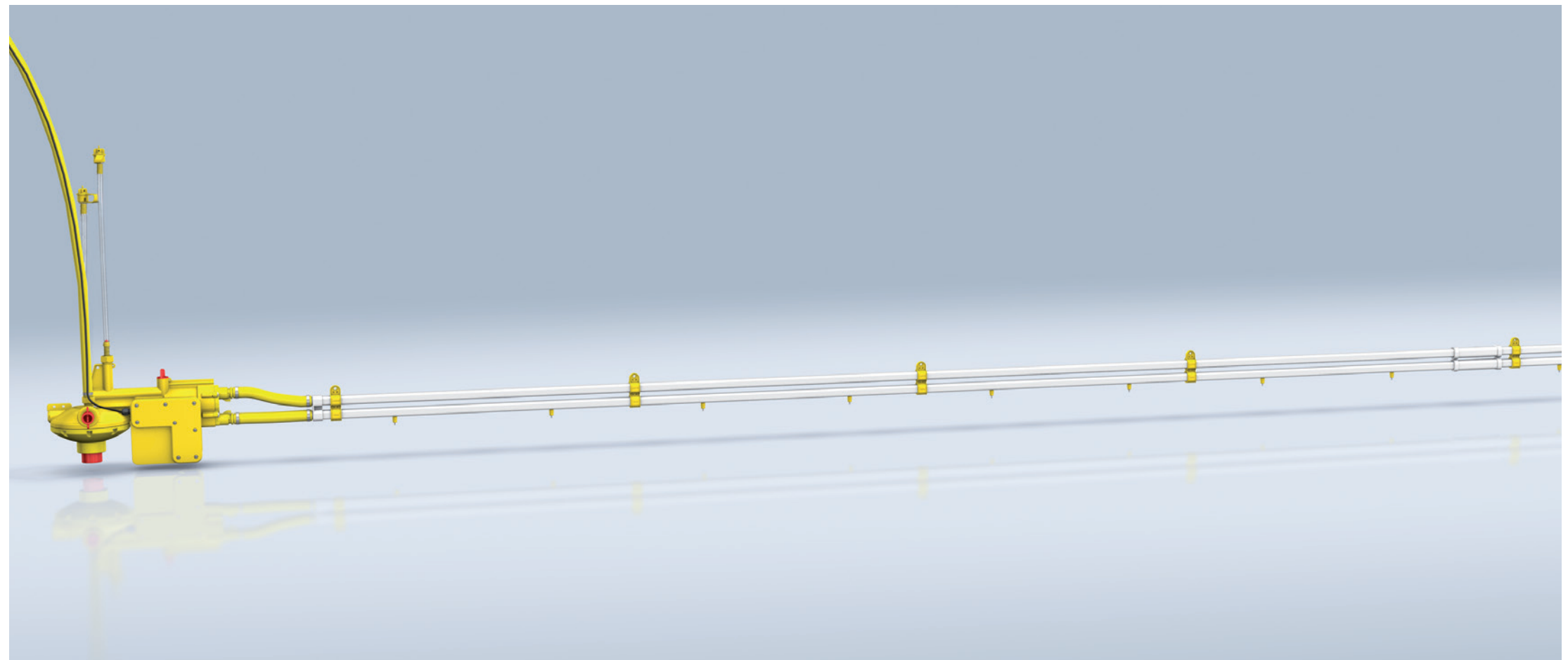
## LUBING Circulation-Drinking-Systems consist of the following components:

The main water supply prepares the drinking water with filtration, regulates the inlet pressure, the addition of medication if necessary and measures the water consumption. The treated water enters the circulation unit via **pressure reducer** with integrated flushing equipment.

The **circulation unit** directs the water at a defined pressure from the integrated pump into the upper supply line. The water runs to the end of the line and flows back to the pump in the nipple line. At the pressure regulator and the circulation unit, pressure and flow rate can be regulated based on the desired drinking line length. Drinking lines up to 120 m length can be realized with only one front or middle connection.

**End pieces** with fully automatic breather units are fitted at the end of each drinking line. If necessary (e.g. in rearing cages), the drinking elements are provided with hangers that are connected to the central suspension system.

The core of the systems are the **LUBING drinking nipples**, which are available with or without drip cup in many variants.



## ADVANTAGES OF THE LUBING CIRCULATION DRINKING-SYSTEM

- no standing water in the drinking line
- uniform water temperature in the entire drinking line
- uniform distribution of vitamins and medicines
- safe water transport due to double pipe cross-section and additional pump
- drinking lines up to 120 m with front or middle connection



### Main water supply

- available in many variants and diameters
- measures, filters, tests and doses in one compact module
- solid flange connections



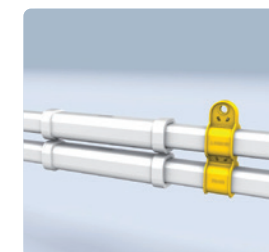
### Mixer

- homogeneous mixing of the stock solution
- permanent circulation prevents the active ingredients from settling on the bottom



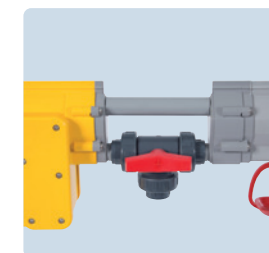
### Pressure regulator Optima E-Flush

- stepless adjustment of the water column
- automatic flushing with the actuator



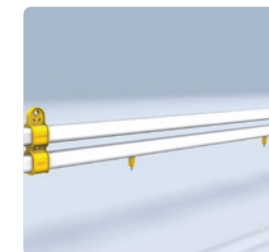
### Coupling and suspension

- single elements are coupled up to the desired length
- suspension are toolless simply plugged directly onto the profile



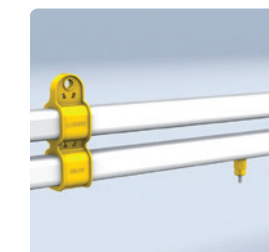
### Front valve

- greatly facilitates flushing and medication or vaccination processes, because the filling of the system needs no longer controlled at the end of the line, this can be controlled directly at the inlet



### Plastic profiles

- The 22 mm square tubes can be placed on top of each other or next to each other, adjusted to the present space



### Drinking nipple and drip cup

- easy cleaning from the outside due to directly screwed in nipples
- one or two-armed drip cups available



### Breather

- end piece for circulation with breather unit
- works fully automatic (e.g. with LUBING flushing computer and drain kit)
- does not have to be operated by hand for the flushing processes

# LUBING

Further information under [WWW.LUBING.COM](http://WWW.LUBING.COM)